



NGAGE VIDEO API v.2.0

v.2.0

Manual Book For User

Contents

Chapter 1. Getting Started	1
Chapter 2. Guideline of nGage Video API Telkomsel	3
nGage Video API - Login	4
nGage Video API – Main Menu	5
nGage Video API - User Menu	6
nGage Video API – API Key Menu	8
nGage Video API - Recording Menu	9
nGage Video API - Dashboard Menu	10

Chapter 1.0

Getting Started

Telkomsel nGage Video API is a product that helps its users to simplify the development of any Video Conference Platform

Telkomsel nGage Video API

You could integrate your beloved applications with our Video Conference as a Service. We understand how hard it can be to build a video conference on top of your app. Setting the server, maintaining the service, the network, etc. So, we provide you with the way out and to boost your productivity even without thinking how hard it can be.

There are two roles in Ngage Video API there is Admin Omega and User (Corporate)

- **Admin Omega** : Create Admin Corporate and assign all resources (Billing profile, API Key , Package , etc) to corporate admin
- **Admin Corporate** : Create Corporate Member and assign all resources (Billing profile, API Key , Package , etc) to corporate member

Telkomsel nGage Video API is a product that helps its users to simplify the development of any Video Conference Platform. Telkomsel nGage are available on the Web, Android, and iOS platforms.



Chapter 2.0

Guideline of nGage Video API Telkomsel

- 2.1 nGage Video API - Login
- 2.2 nGage Video API - Main Menu
- 2.3 nGage Video API - User Menu
- 2.4 nGage Video API - API Key Menu
- 2.5 nGage Video API - Recording Menu
- 2.6 nGage Video API - Dashboard Menu

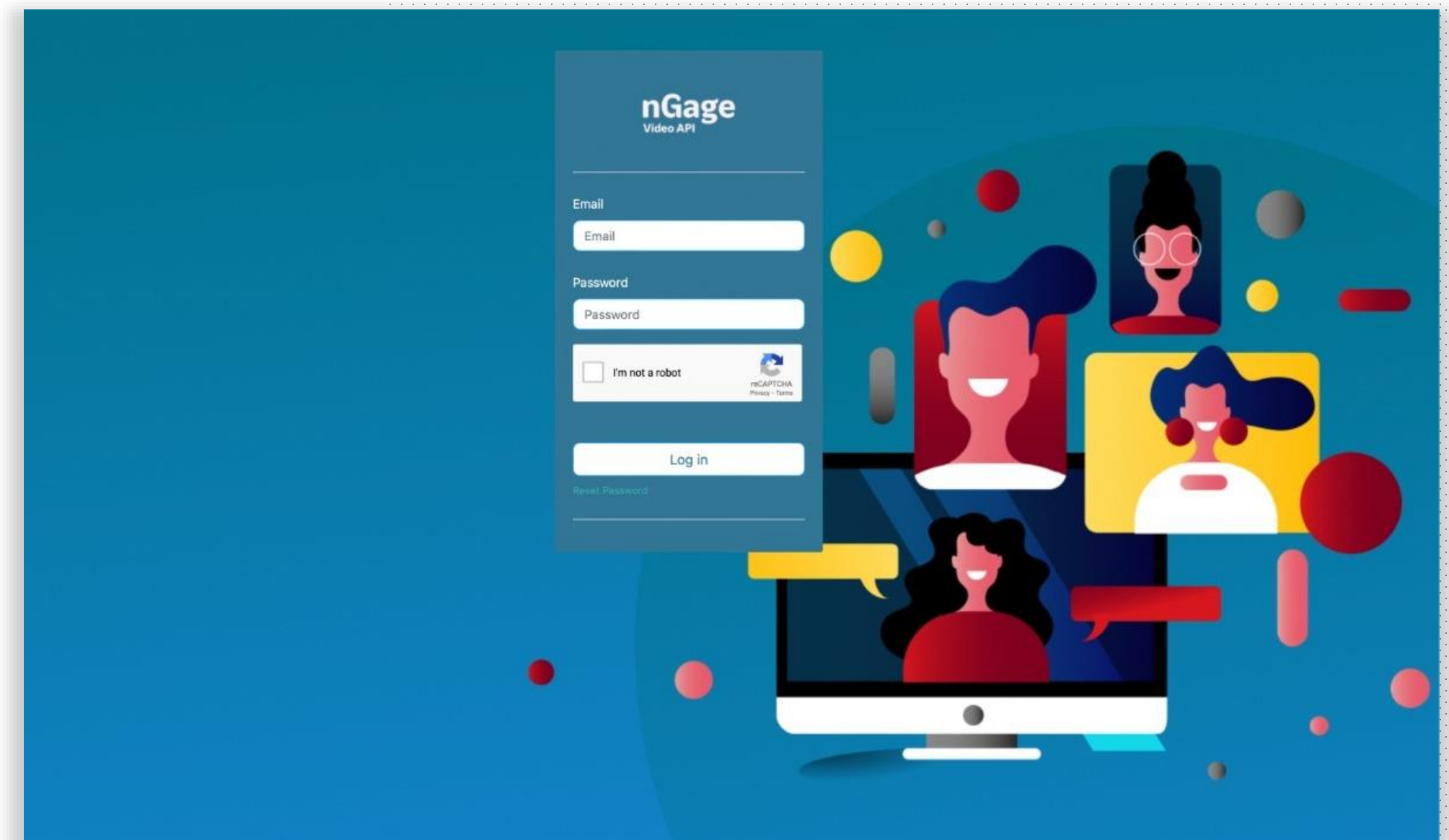
Telkomsel nGage Video API is a product that helps its users to simplify the development of any Video Conference Platform

Chapter 2.1 – nGage Video API

Login

On this page you will Enter **username, password,** and **tick captcha.**

After that click login, system will enter to Dashboard page.

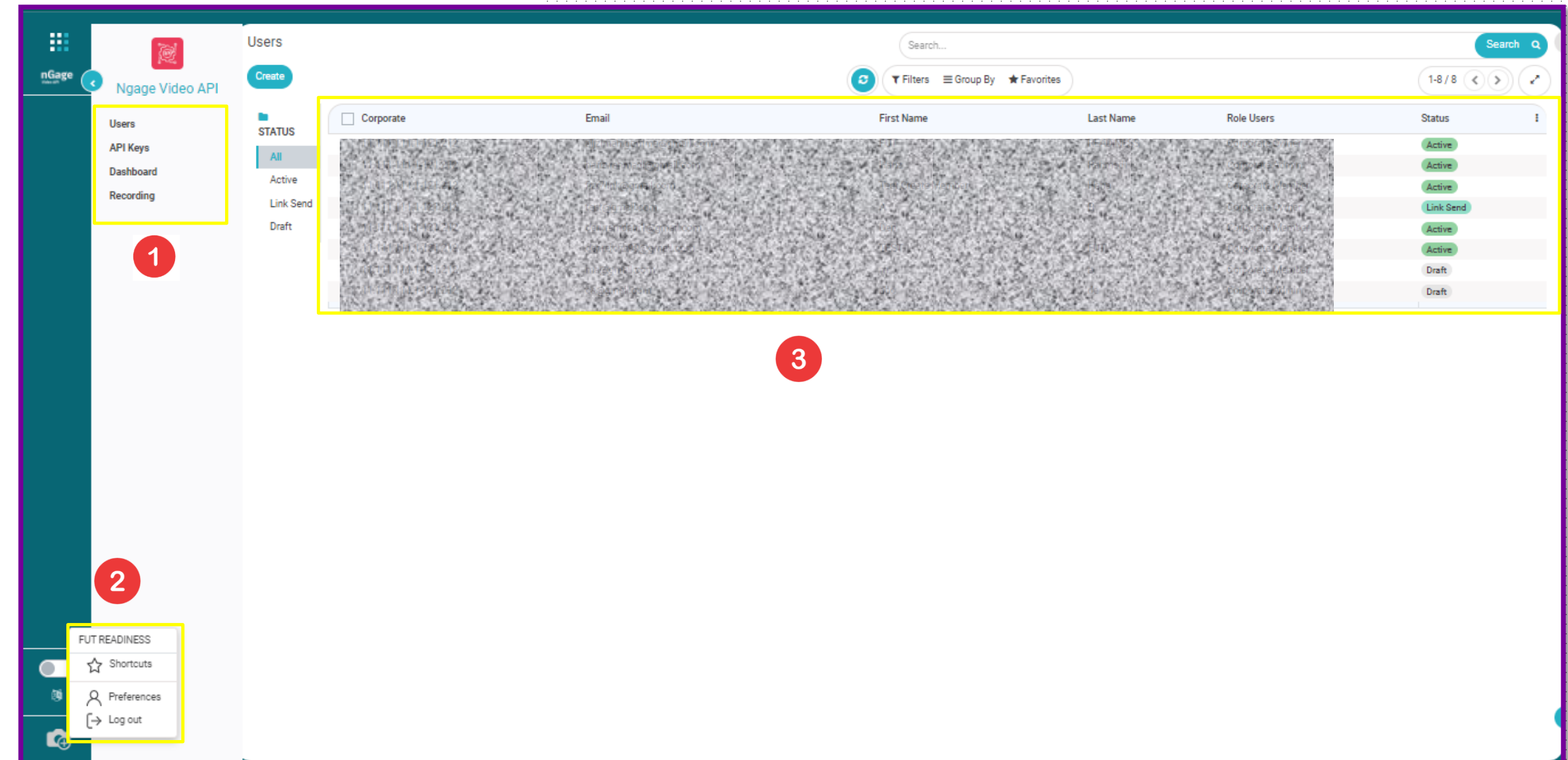


Chapter 2.2 – nGage Video API

Main Menu

On the Main Menu page there is the three sections described under the table :

- 1. Menu Panel**
Menu panel contain main feature of Admin Corporate role
- 2. Profile Panel**
Profile panel contain user profile photo , User role, User Preference and Logout button
- 3. Working Panel**
Working panel contain work with active Features in nGage.

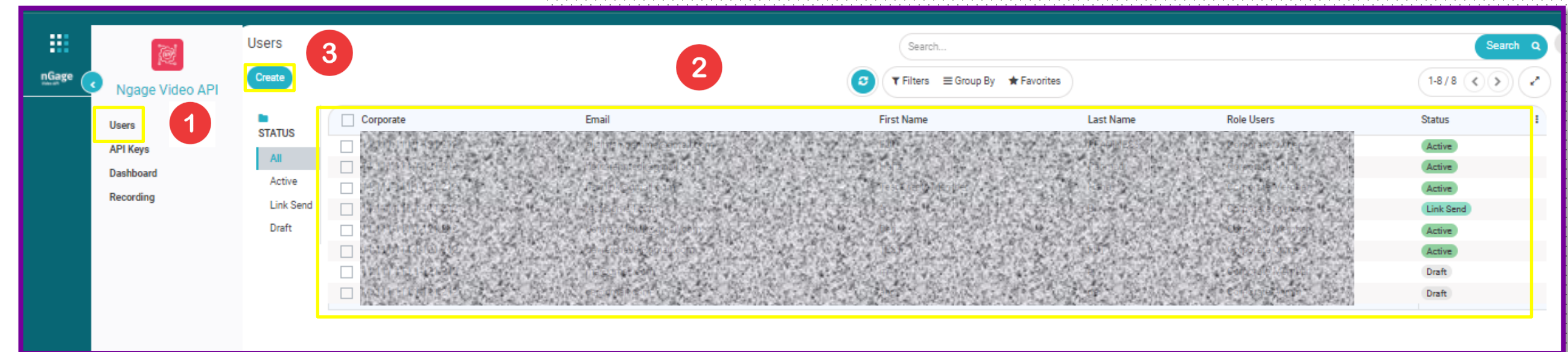


Chapter 2.2 – nGage Video API

User Menu

This page working for monitoring available users and creating new users . Following steps for creating a new user :

1. On the main page, select user
2. Review the existing User, if doesn't exist, create a new one
3. Select create to create a user



Status User

- Draft : Concept of new user
- Active : User who have been confirmed
- Non Active : User who have deactivated data
- Link Send : User who have been sent link

Chapter 2.2 – nGage Video API

User Menu (Cont.)

This page working for monitoring available users and creating new users . Following steps for creating a new user :

4. Fill User data consist of role user, Corporate and Responsible
5. Fill Data PIC consist of Email First & last name
6. Chose Billing data
7. Click save
8. Click check data, the system will lookup data. When look up data is complete, select Confirm

The screenshot shows the 'Users / New' form in the nGage Video API interface. The form is divided into several sections:

- Users:** Contains fields for Role Users (dropdown menu), Email, and Corporate Responsible (dropdown menu). A red circle with the number 4 highlights the Role Users dropdown.
- Data PIC:** Contains fields for First Name and Last Name. A red circle with the number 5 highlights the Last Name field.
- Billing:** Contains a table with columns for Name, Corporate Name, Billing Profile, Quota Type, and Status. A red circle with the number 6 highlights the 'Add a line' button.
- API Keys:** Contains a table with columns for Name, Corporate Name, Billing Profile, Quota Type, and Status.

A red circle with the number 7 highlights the 'Save' button at the top of the form.

The screenshot shows the 'Users / ca@gmail.com' form in the nGage Video API interface. The form is divided into several sections:

- Users:** Contains fields for Name, Corporate Name, Billing Profile, Quota Type, and Status.
- Data PIC:** Contains fields for First Name and Last Name.

A red circle with the number 8 highlights the 'Confirm' button at the top of the form.

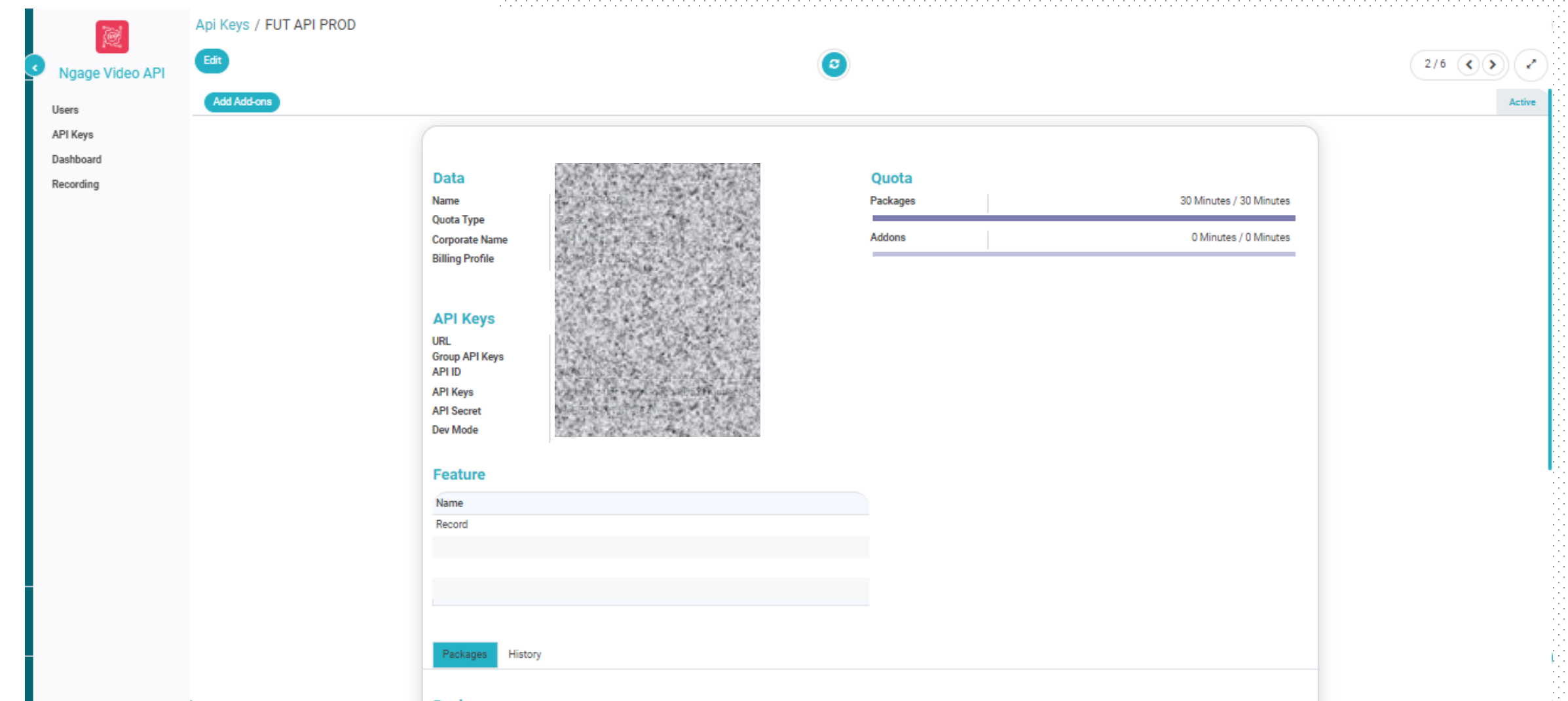
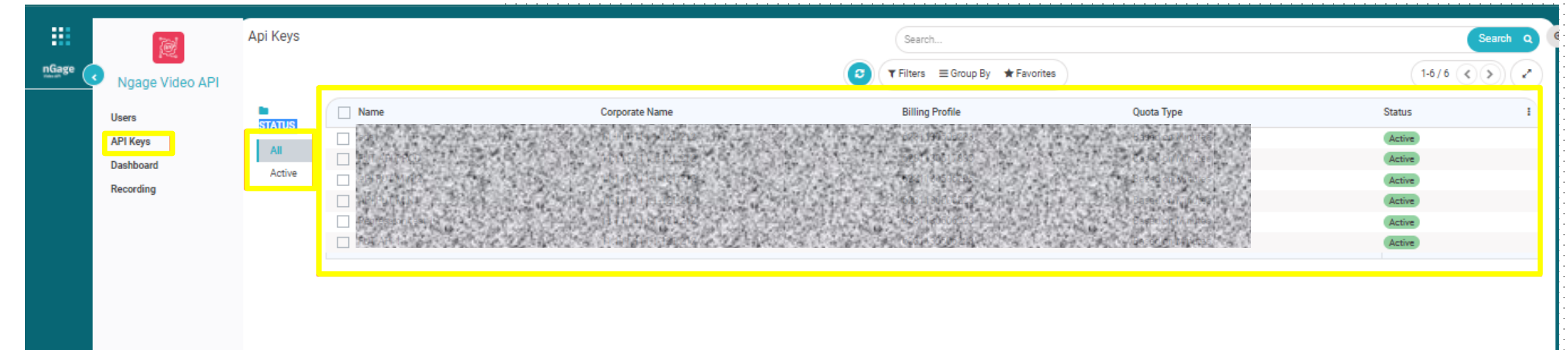
Chapter 2.2 – nGage Video API

API Key Menu

Function for monitoring API Key that available in the corporate. Api key detail included name, quota type, corporate name, billing profile, package, add on, URL, Group API key, API ID, API keys, Api secret, Feature, package and history package.

Status API Key

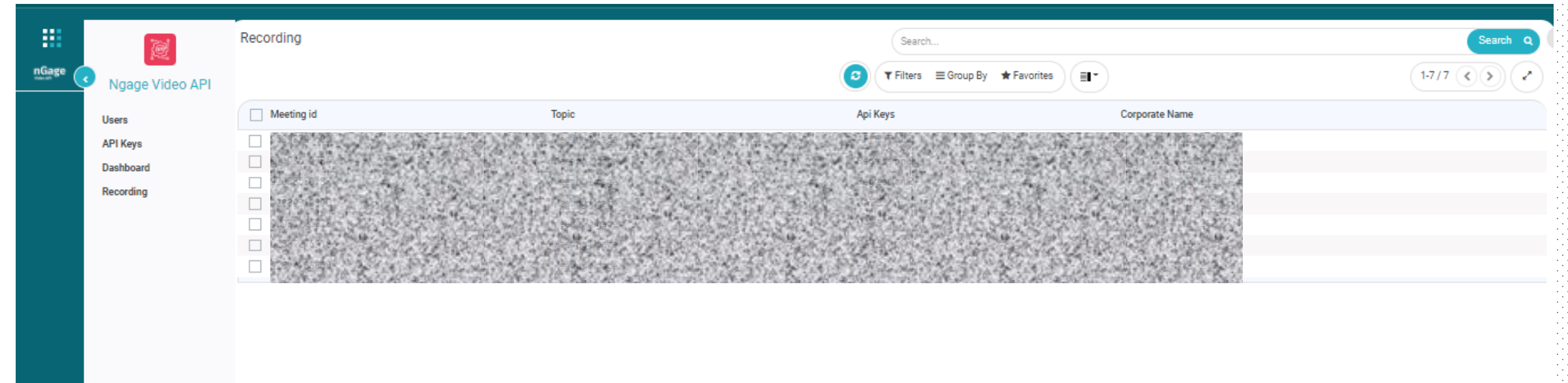
- Draft : Concept of new API Key
- Active : Available API Key



Chapter 2.2 – nGage Video API

Recording Menu

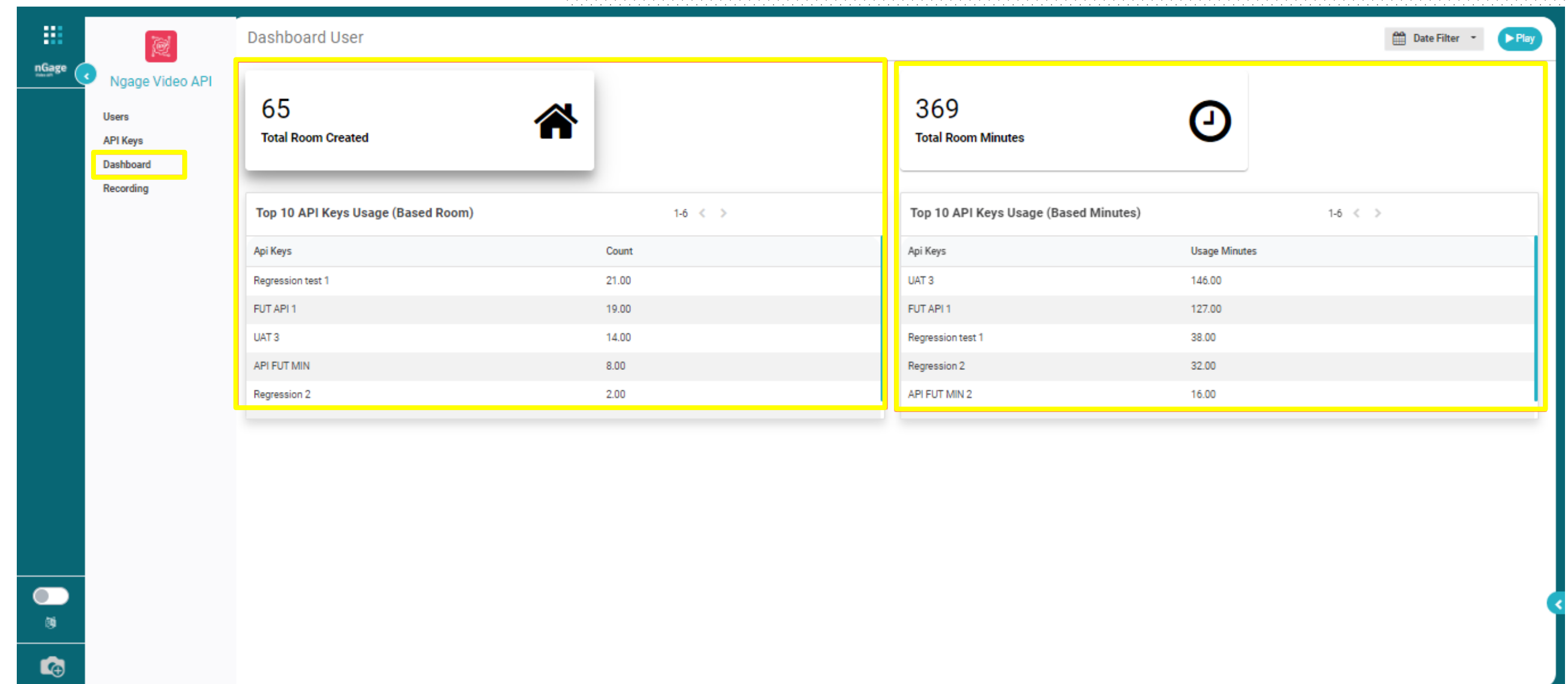
In the recording menu, user can see a list of recordings and their details (by clicking on the selected recording). Recording detail data displayed include meeting id, topic, API Key, Corporate Name, and file recording (File type, File extension, File Size, Recording Type, and download URL)



Chapter 2.2 – nGage Video API

Dashboard Menu

Dashboard contain summary user on use of ngage video API. It categorized based on total room and total minute. It also showing top 10 API key based on room and minute.



Thank You for Reading

NGAGE VIDEO API V.2.0
Manual Book for User